

Technical sheet for the Wallcover System

Utilized for the coating of masonry work in concrete.

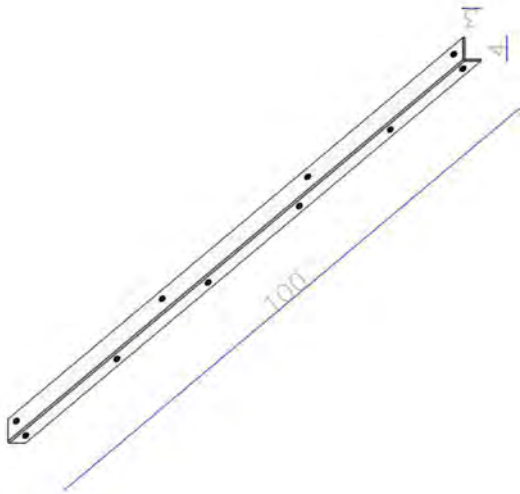
The Wallcover system is a structure composed by pre-bent steel panels made of an electrowelded metal mesh, 100 % recyclable, for the coating of walls with local stone material.

The Wallcover system has to be assembled and filled on site with break-resistant stone material, that passed cycles of freezing and thawing and with a granulometry of 70/120 mm.

TECHNICAL CHARACTERISTICS

Characteristics of the wire	<i>Wire diameter 6 mm, Tensile strength of the wire >517 Mpa, Average elongation 6,47% (EN10223/8, ISO6892-1, EN 10218-1)</i>
Corrosion protection	<i>Galvanic coating Zn/Al (zinc 95% - aluminium 5%) >290gr/mq, in accordance to the norm UNI EN 10244-2 class A. Corrosion test in artificial atmosphere in saline mist with a surface affected by rust that is less than 5% (EN10223/8, EN ISO 9227). Adhesion of the galvanizing EN 10442-2, EN 10218-1, EN ISO 7802</i>
Weld shear strength	<i>Average shear wire strength >75% of the wire resistance, tested on a sample of 4 weldings selected casually (EN10223/8, EN ISO 689-2).</i>
Mesh sizes	<i>Mesh 50 x 200 mm, single vertical wire, double horizontal wire on the frontal side.</i>
Panel configuration	<i>The panel features an L shaped bend on the front panel, with a depth of 20 cm</i>
Wall anchoring system	<i>The panel is secured to the wall thanks to internal rods, made of 6 mm steel wire, specifically bent (and in a sufficient number to spread the internall stress equally) anchored to the L shaped anchoring bars 100 x 4 x 3 cm secured to the concrete with specific dowels. The panels will be connected between each other through specific hooks.</i>
Cover panel configuration	<i>Single wire panel with 50 x 200 mm mesh</i>
Hazardous substances	<i>All components are free of hazardous substances following an evaluation carried out following the instructions of the EOTA Technical Report 034 of October 15 General BWR3 Checklist for EADs/ETAs Dangerous substances</i>



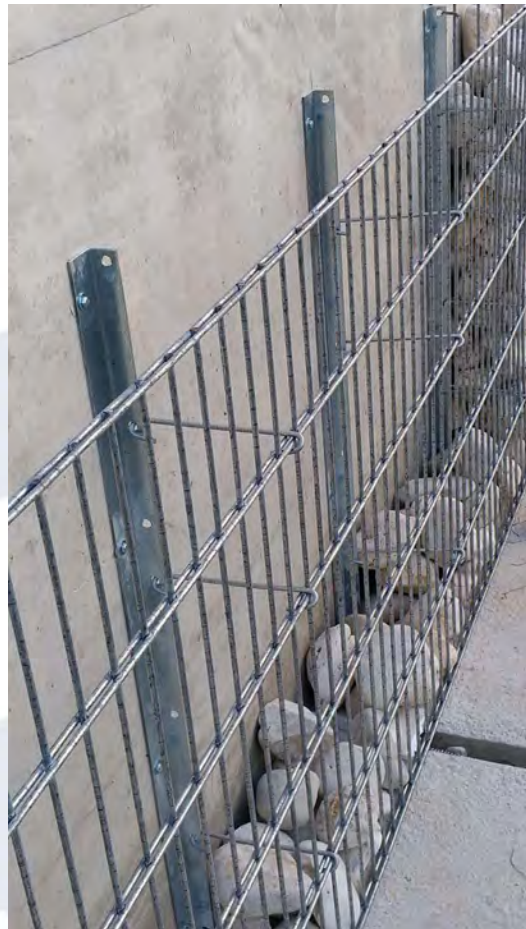


ANCHORING BAR

Profile in electrowelded metal sheet
thickness 3 mm
size 1000 / 2000 x 30 x 40 mm
steel 235 JR Z200
holes \varnothing 11 mm

SPECIAL RODS

wire C4D \varnothing 6 mm
Galfan aluzinc coating 95/5
>290 g/m² norm EN10244-2
strength >500 MPa
norm EN10218-1 pt.3
length 15,7 cm



CONNECTION HOOKS (Patent pending)

Wire C4D \varnothing 6 mm
Galfan aluzinc coating 95/5
>290 g/m² norm EN10244-2
strength >500 MPa

