



**METALLURGICA
LEDRENSE** SOC.COOP.



LISTA DE PIEZAS

LADO LARGO

CABEZAS

PISO

CUBIERTA

COLUMNAS

PLAN DE MONTAJE:



100 x 15 x 50 cm

100 x 15 x 100 cm

200 x 15 x 50 cm

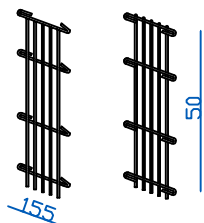
200 x 15 x 100 cm

posicionamiento de las
columnas



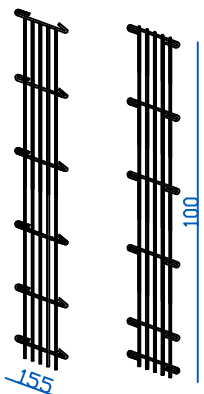
CABEZAS

cod. T1.05-S

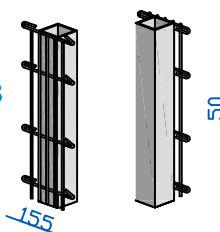


DESCRIPCIÓN:
alambre individual
galvanizado (95/5)
diámetro 6 mm
malla 19 x 200 mm

cod. T1-S

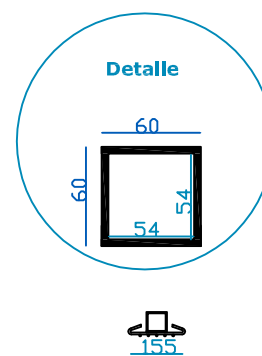
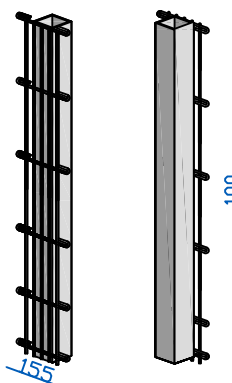


cod. T2.05-S



DESCRIPCIÓN:
palo galvanizado
60 x 60 mm
grosor 3 mm

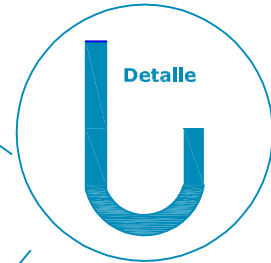
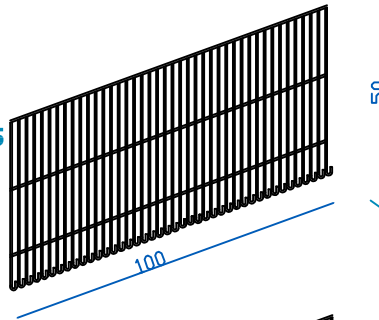
cod. T2-S



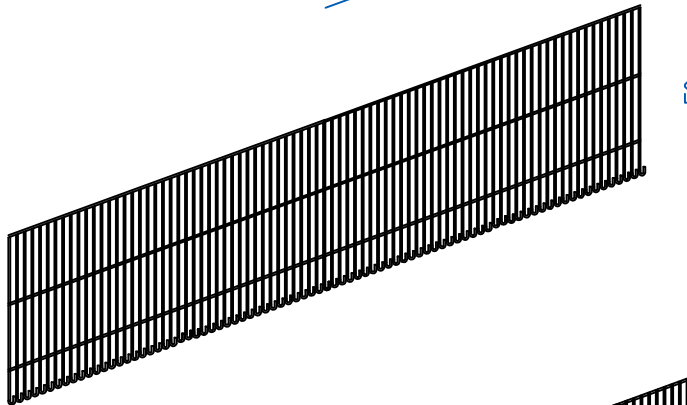
LADO LARGO

DESCRIPCIÓN:
alambre individual
galvanizado (95/5)
diámetro 6 mm
malla 19 x 200 mm

cod. L1.05

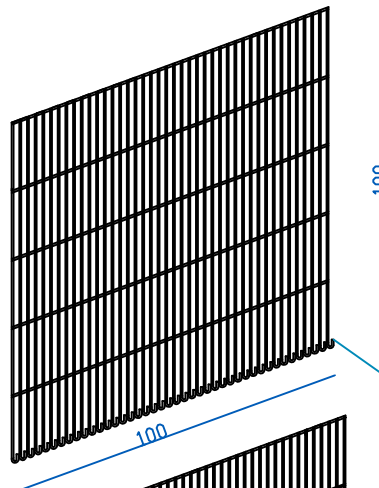


cod. L2.05

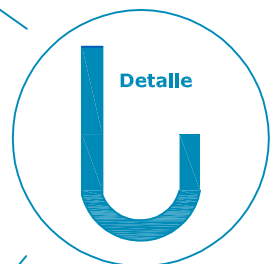


50

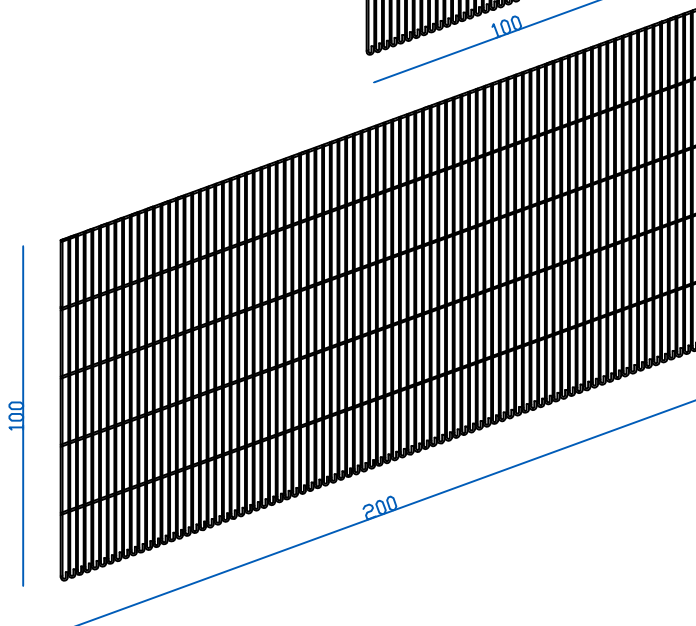
cod. L1



100



cod. L2



100

200

PISO CUBIERTA

mod. B
mod. C

DESCRIPCIÓN:
alambre individual
galvanizado (95/5)
diámetro 6 mm
malla 19 x 200 mm

modelo NO SUPERPONIBLES

cod. B1/1-S

cod. C1/1-S



cod. B2/1-S

cod. C2/1-S



modelo SUPERPONIBLES

cod. B1/2-S

cod. C1/2-S



cod. B2/2-S

cod. C2/2-S



TIRANTES INTERNOS

cod. QS-S



ANILLOS DE CIERRE

cod. AN

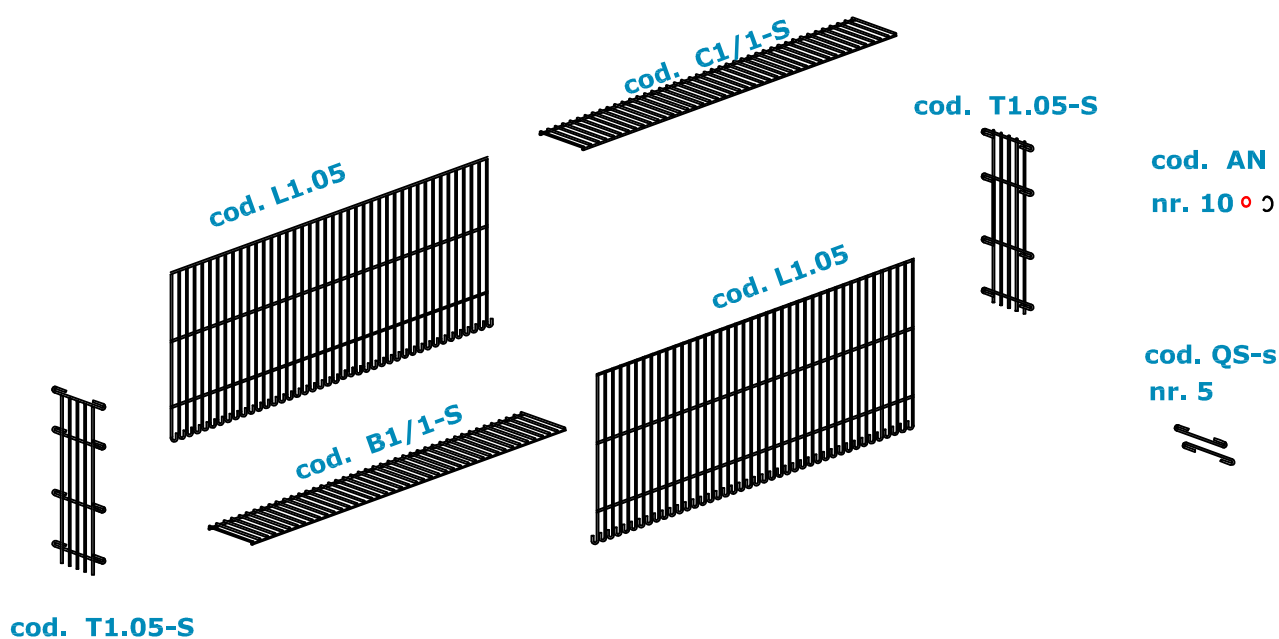


GJM-S 1.05.1

100 x 15 x 50cm

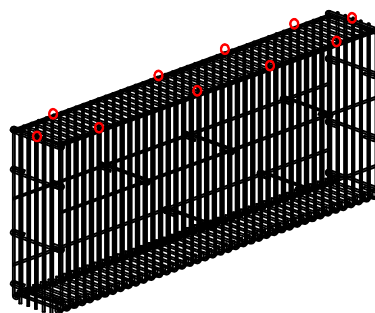
modelo NO SUPERPONIBLES

INVENTARIO DE COMPONENTES



RESUMEN:

| | |
|-------------|--------|
| cod. L1.05 | nr. 2 |
| cod. B1/1s | nr. 1 |
| cod. C1/1s | nr. 1 |
| cod. T1.05s | nr. 2 |
| cod. QS s | nr. 8 |
| cod. AN | nr. 10 |



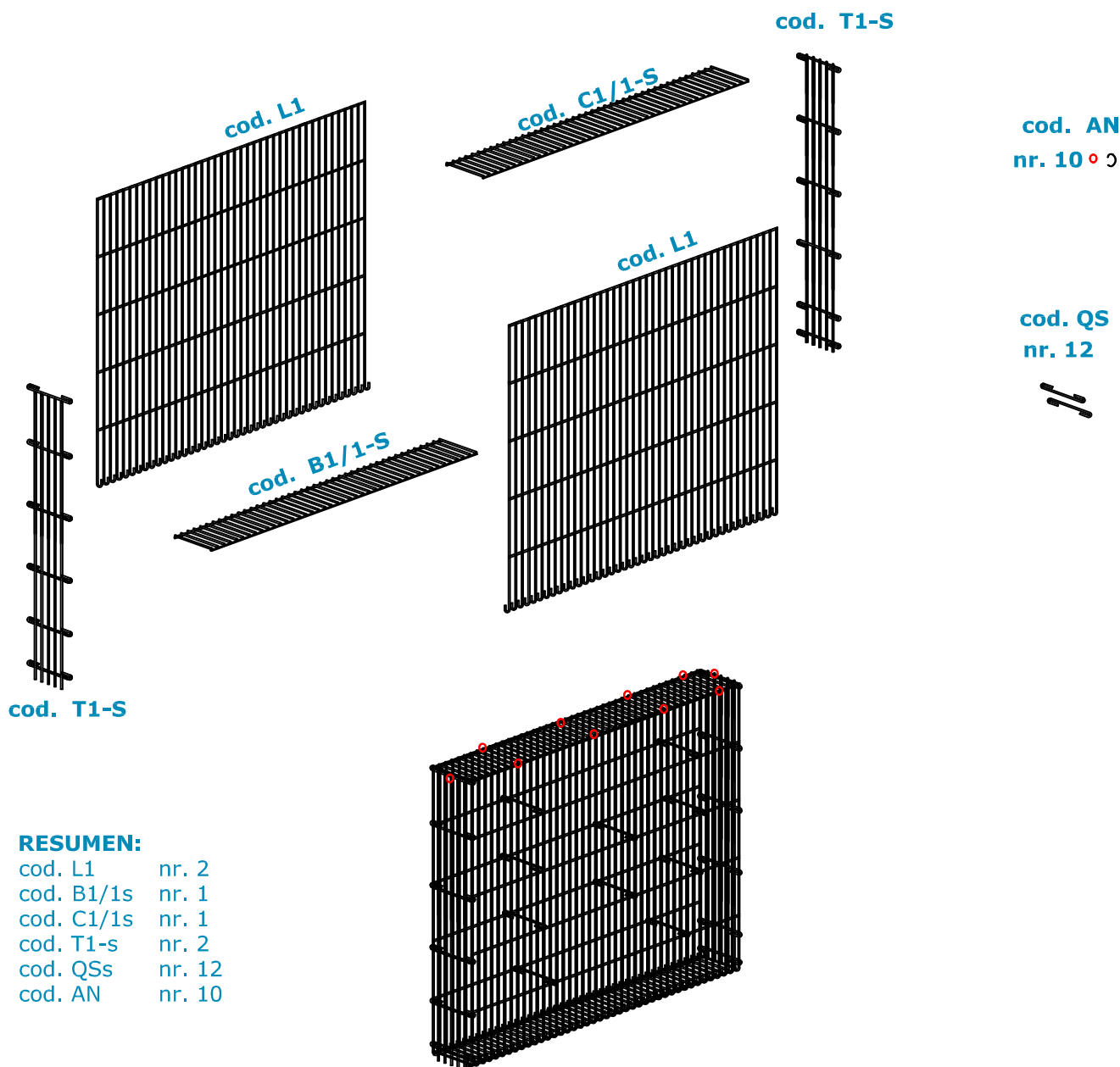
PESO VACÍO
Kg. 15

GJM-S 1.1

100 x 15 x 100cm

modelo NO SUPERPONIBLES

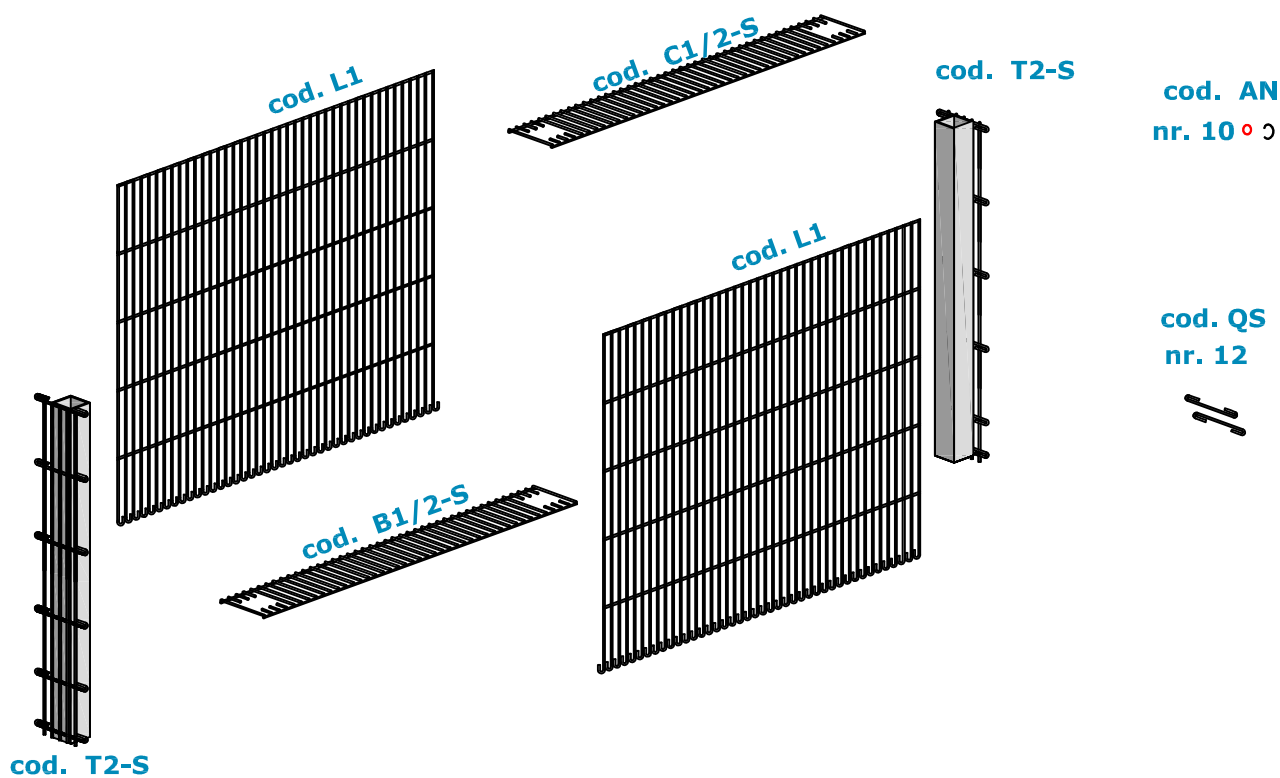
INVENTARIO DE COMPONENTES



GJM-S 1.2

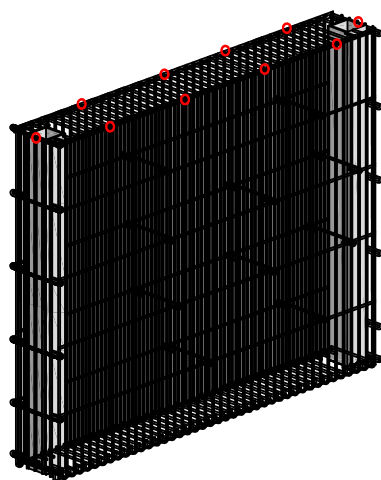
100 x 15 x 100cm
modelo SUPERPONIBLES

INVENTARIO DE COMPONENTES



RESUMEN:

| | |
|------------|--------|
| cod. L1 | nr. 2 |
| cod. B1/2s | nr. 1 |
| cod. C1/2s | nr. 1 |
| cod. T2-s | nr. 2 |
| cod. QSs | nr. 12 |
| cod. AN | nr. 10 |



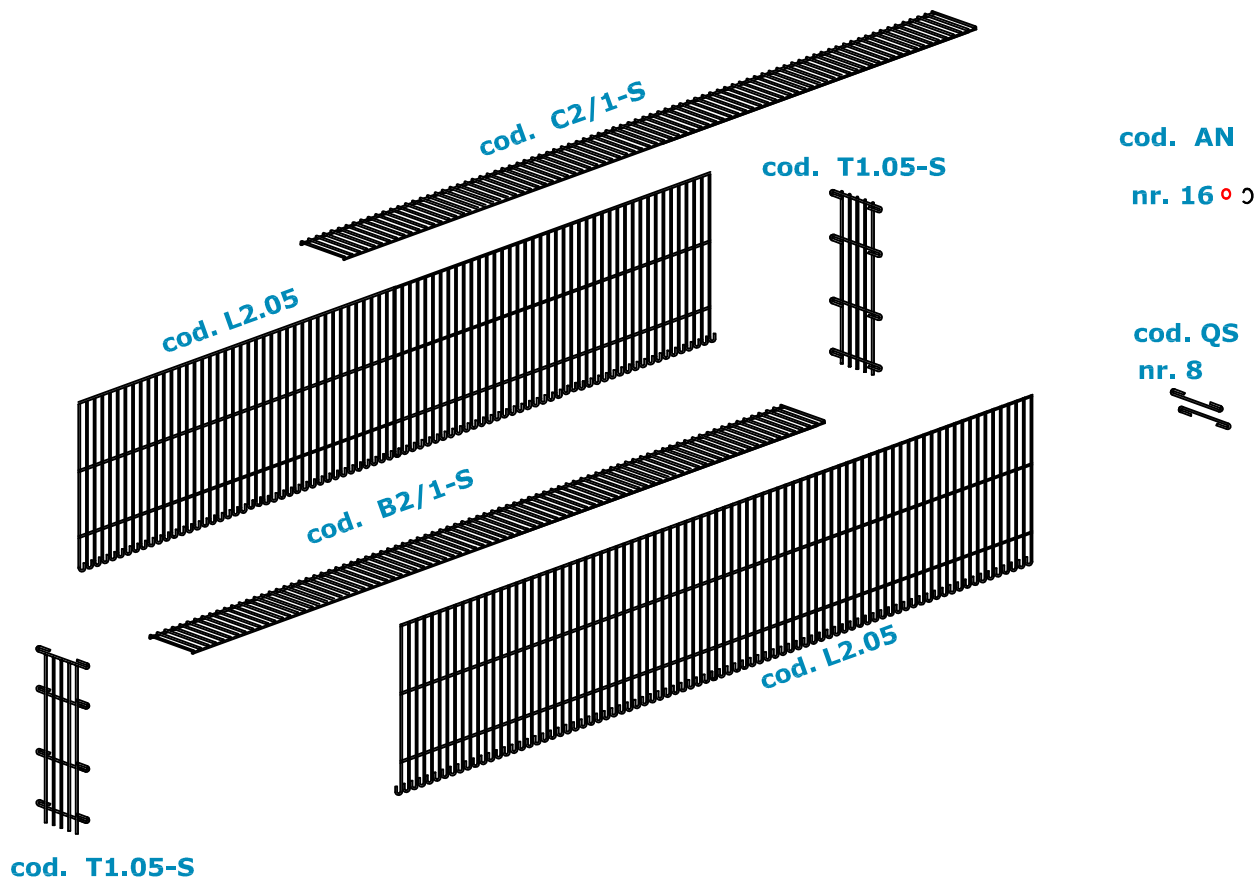
PESO VACÍO
Kg. 40

GJM-S 2.05.1

200 x 15 x 50cm

modelo NO SUPERPONIBLES

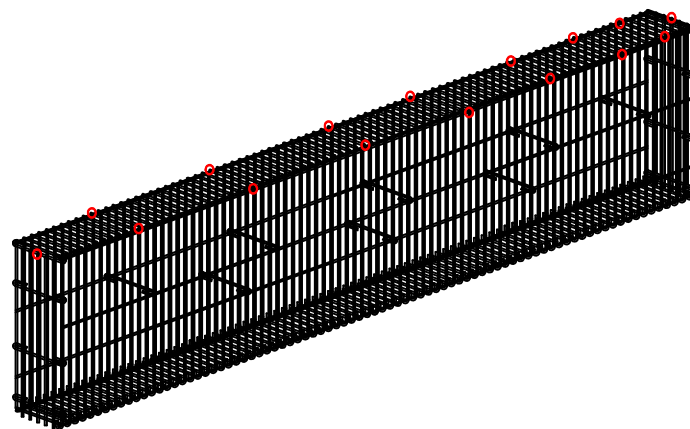
INVENTARIO DE COMPONENTES



RESUMEN:

| | |
|-------------|--------|
| cod. L2.05 | nr. 2 |
| cod. B2/1s | nr. 1 |
| cod. C2/1s | nr. 1 |
| cod. T1.05s | nr. 2 |
| cod. QS s | nr. 8 |
| cod. AN | nr. 16 |

PESO VACÍO
Kg. 31



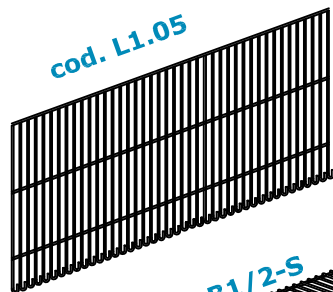
GJM-S 1.05.2

200 x 15 x 50cm

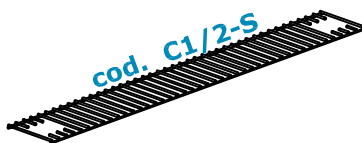
modelo SUPERPONIBLES

INVENTARIO DE COMPONENTES

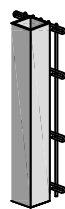
cod. L1.05



cod. C1/2-S

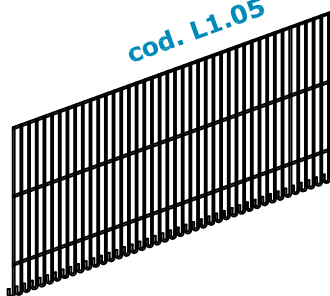


cod. T2.05-S

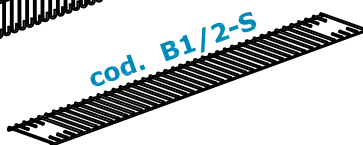


cod. AN
nr. 10

cod. L1.05



cod. B1/2-S



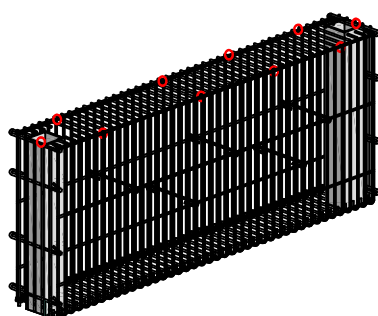
cod. QS-s
nr. 5



cod. T2.05-S

RESUMEN:

| | |
|-------------|--------|
| cod. L1.05 | nr. 2 |
| cod. B1/2s | nr. 1 |
| cod. C1/2s | nr. 1 |
| cod. T2.05s | nr. 2 |
| cod. QS s | nr. 8 |
| cod. AN | nr. 10 |



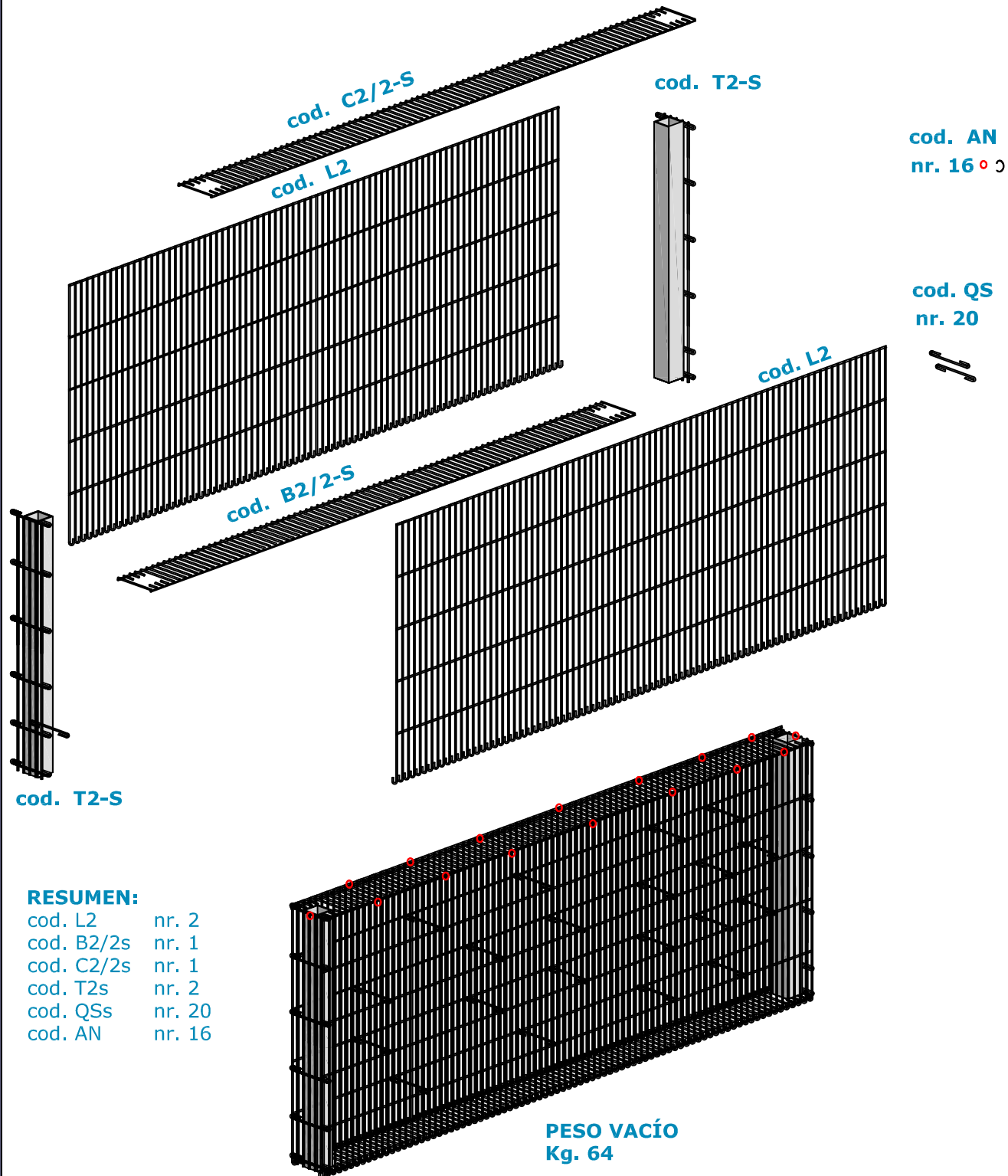
PESO VACÍO
Kg. 19

GJM-S 2.2

200 x 15 x 100cm

modelo SUPERPONIBLES

INVENTARIO DE COMPONENTES

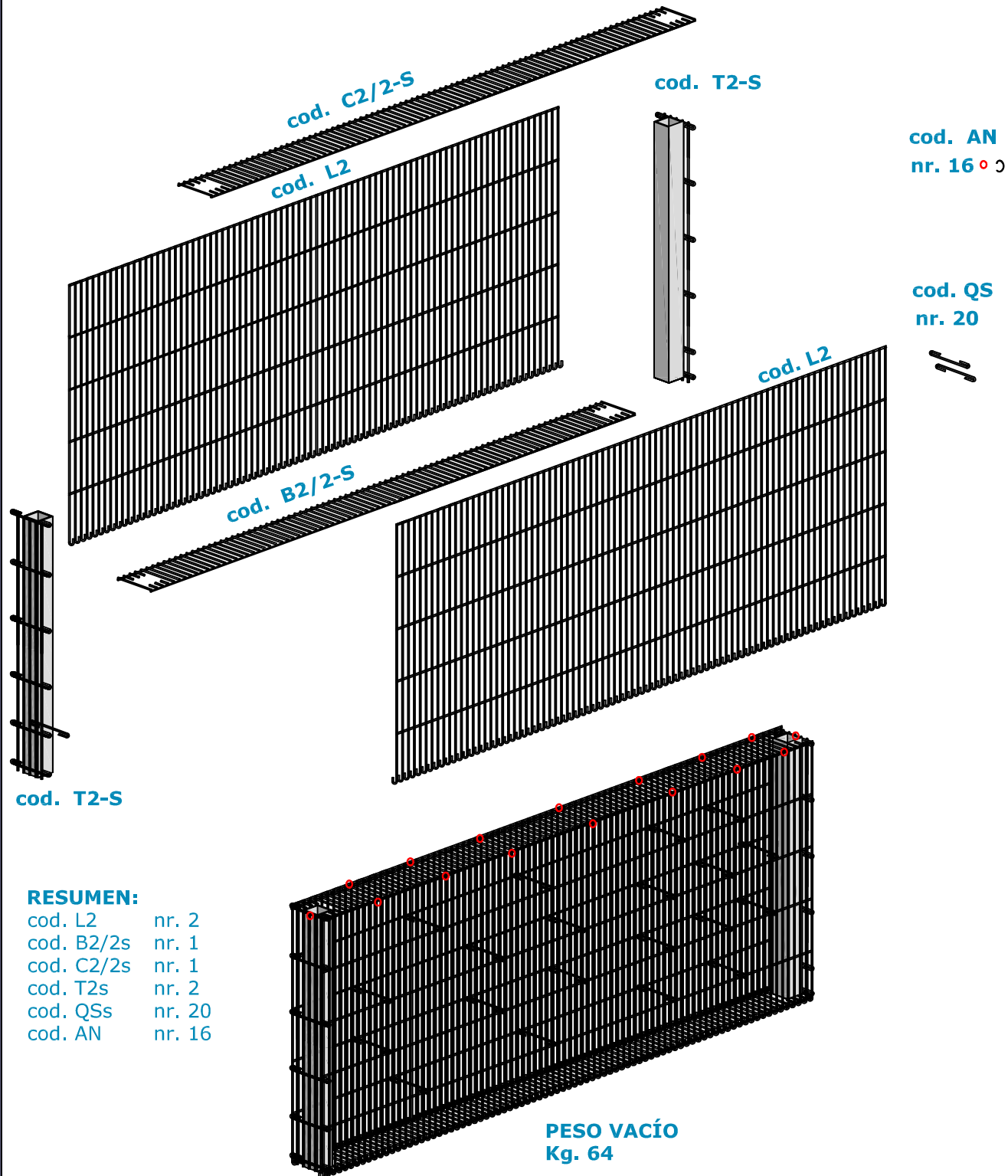


GJM-S 2.2

200 x 15 x 100cm

modelo SUPERPONIBLES

INVENTARIO DE COMPONENTES



rev. 2021

SISTEMA PATENTADO

GJM-SLIM
STEEL BOX®

METALLURGICA
LEDRENSE
Soc.coop.